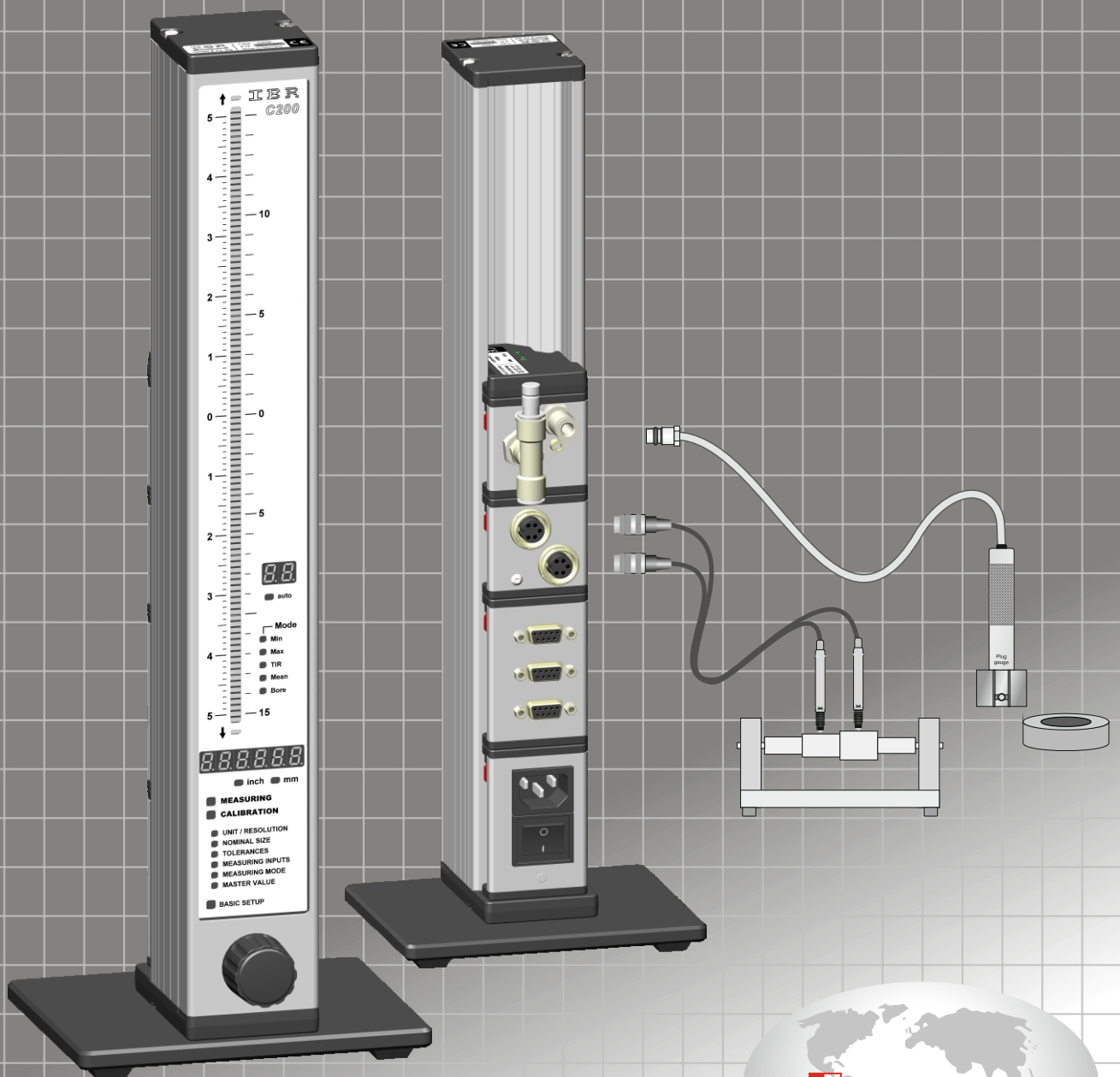


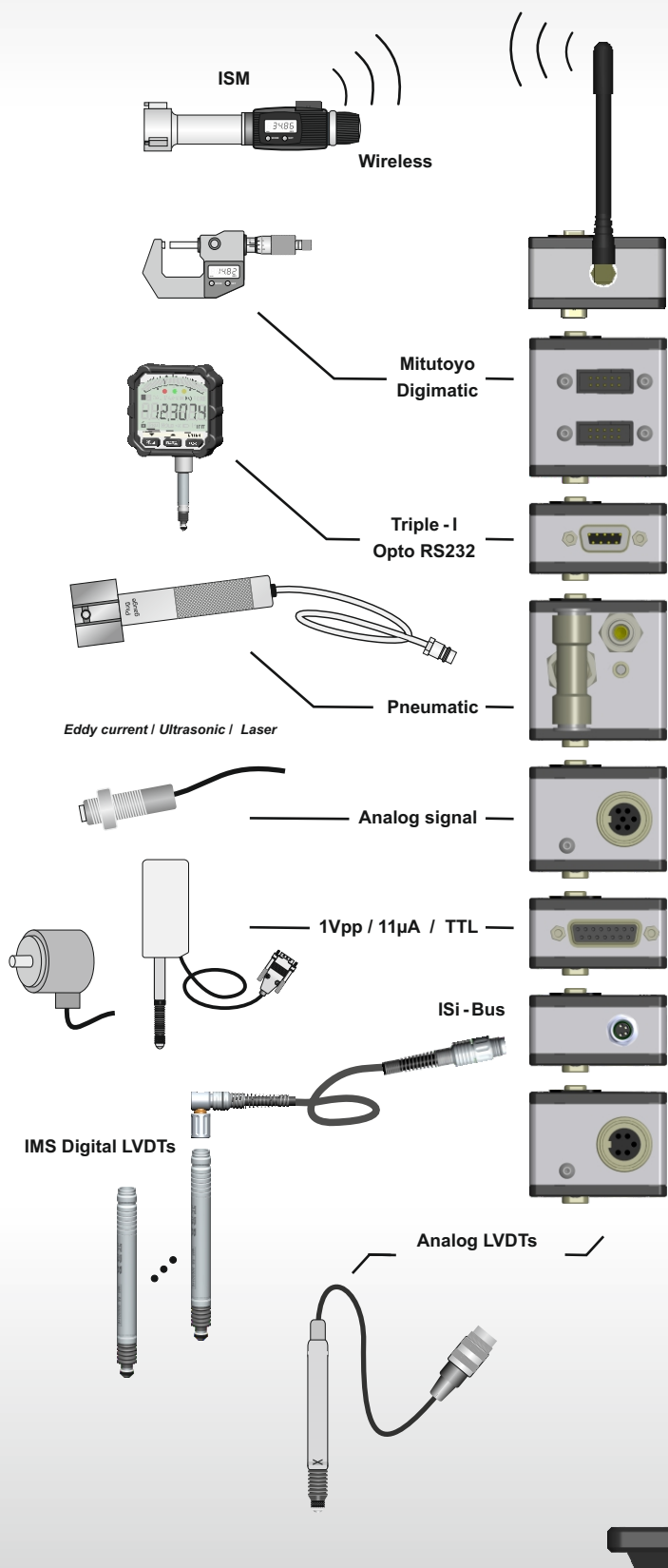
# ProX200

## Electronic Column Gage



# ProX200 Modular Column Gage

The ProX200 Column Gage is an electronic column gage for connecting 1... analog or digital sensors. Includes both analog and digital lvdt probes, air gaging, sensors with current or voltage output, Rs232, digital indicators, calipers, and more.



## Features

- Modular design
- Simple handling
- Universal meas. device inputs
- Wireless meas. data transmission
- Comfortable display unit
- Highly sophisticated measuring programs
- Easy cascading

Static and dynamic measuring programs ( Min, Max, TIR, Mean and Bore with automatic function )

Manual and automatic switching of 1 ... 8 gauges

Classification of components in 1 ... 30 grades

Display of absolute measured values or comparative deviations in "mm" or "inch"

Quick overview over the tolerance result of parts by the 3-colour column display ( 105 LEDs ) with automatic colour change and superimposable tolerance marks

Auto. calibration using 1 or 2 masters ( manual or timer forced execution )

Up to 8 freely combinable measuring inputs with separate multipliers for each input ( ±0.001 ... ±59.999 )

← RS232 connector

← Foot / hand switch and tolerance outputs

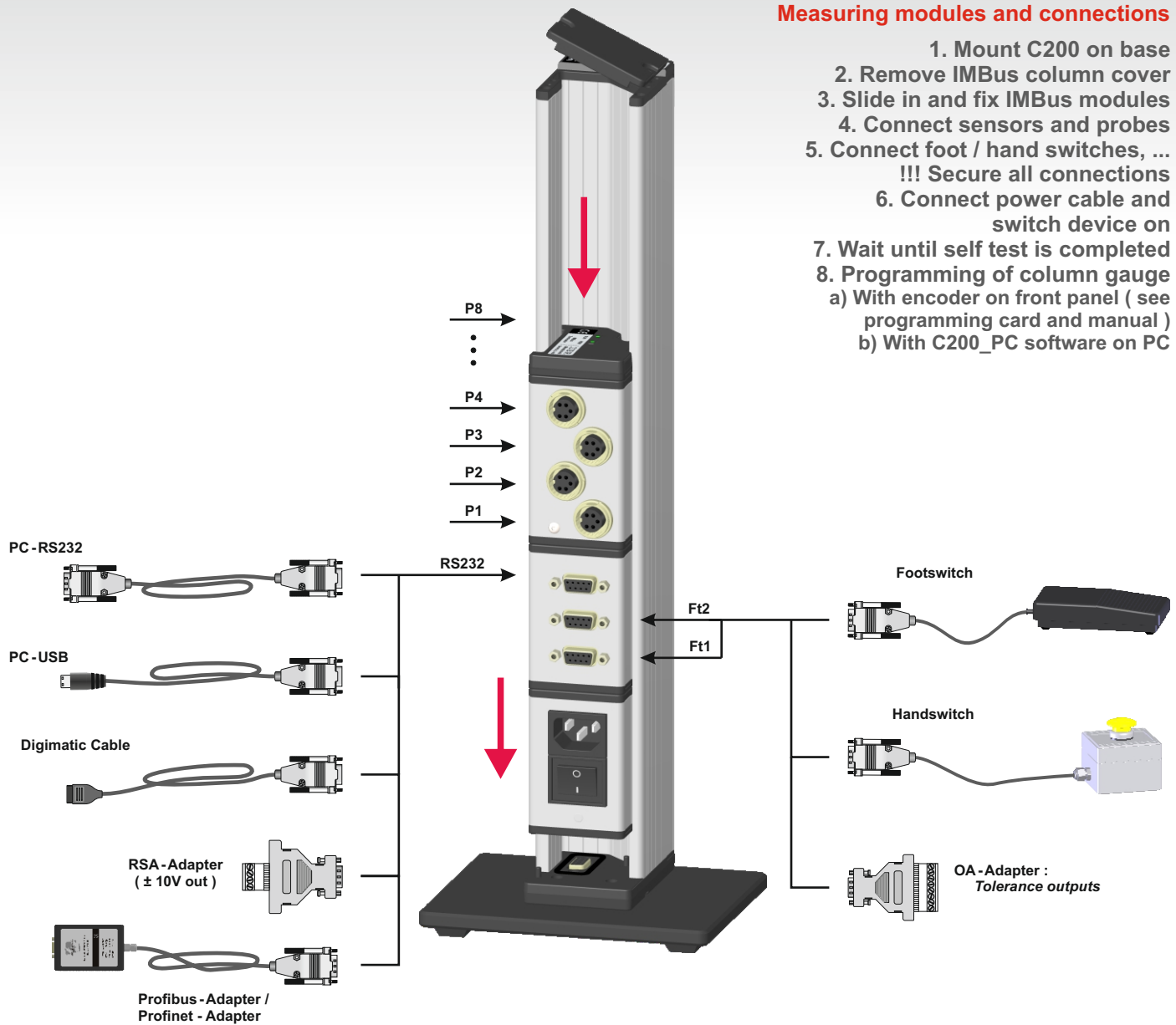
← IMB-ps2 : 100 ... 240 VAC  
- optional -  
IMB-dc1 : 9 ... 32 VDC  
IMB-acc : Accu pack

## 1

### Assembly

#### Measuring modules and connections

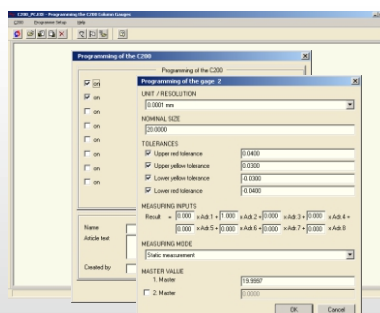
1. Mount C200 on base
2. Remove IMBus column cover
3. Slide in and fix IMBus modules
4. Connect sensors and probes
5. Connect foot / hand switches, ...  
!!! Secure all connections
6. Connect power cable and switch device on
7. Wait until self test is completed
8. Programming of column gauge
  - a) With encoder on front panel ( see programming card and manual )
  - b) With C200\_PC software on PC



## 2

### Programming

#### PC Software : ProX200\_PC



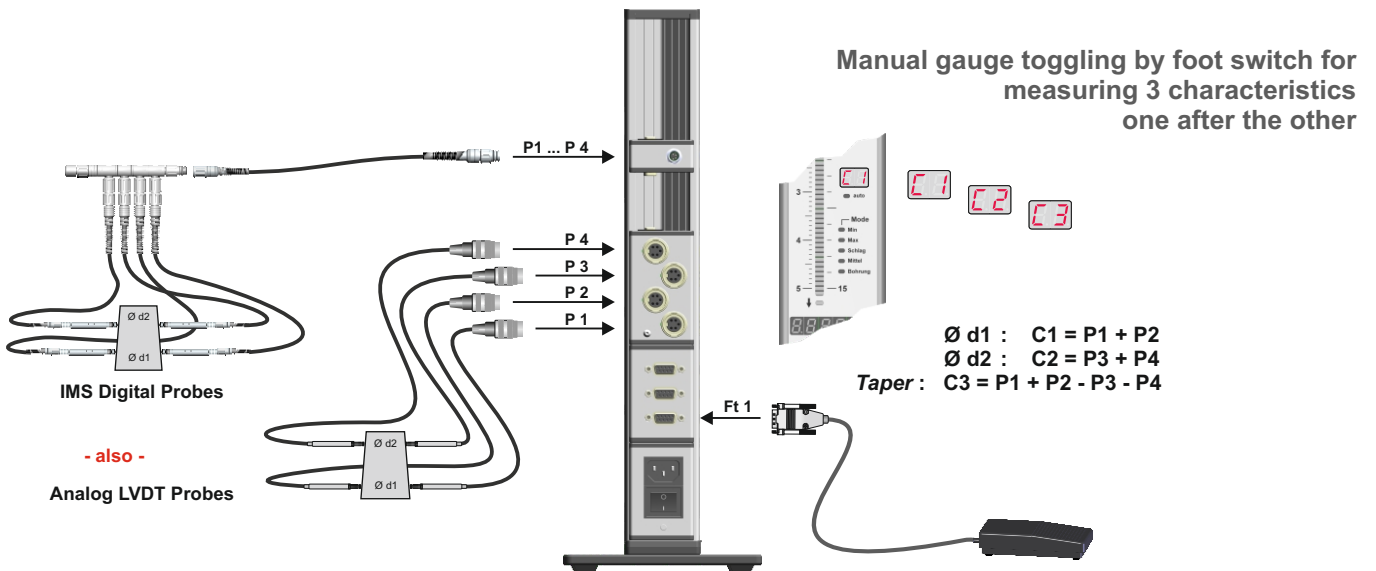
For PC connection the PC-RS232 or PC-USB cable is required.

# Application examples

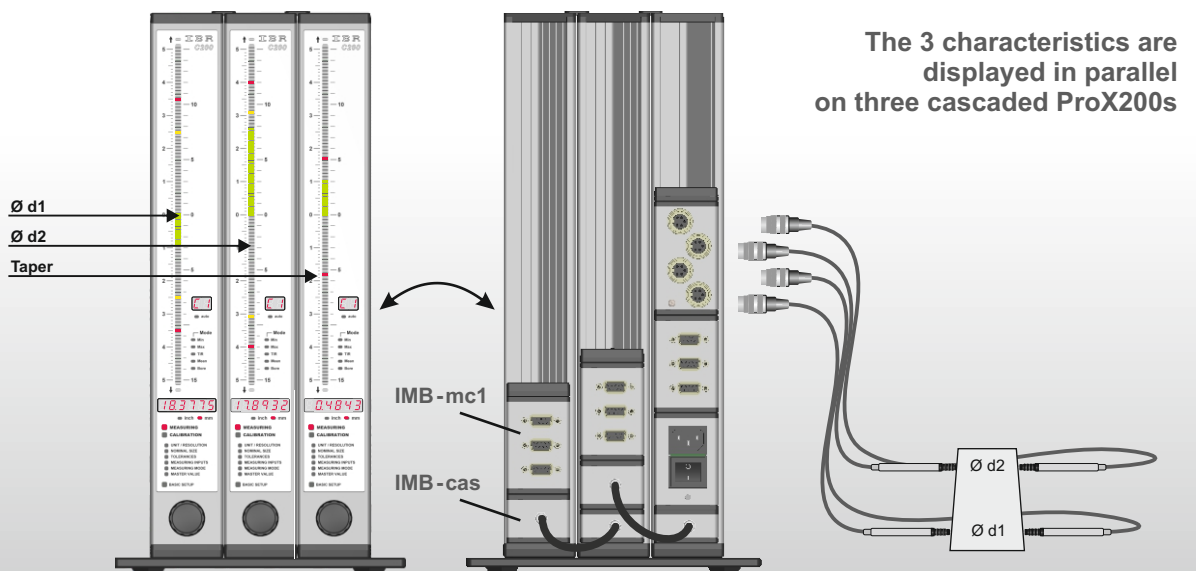
## Connection of 1 ... 8 bore gauges



## Testing of a component with 3 characteristics

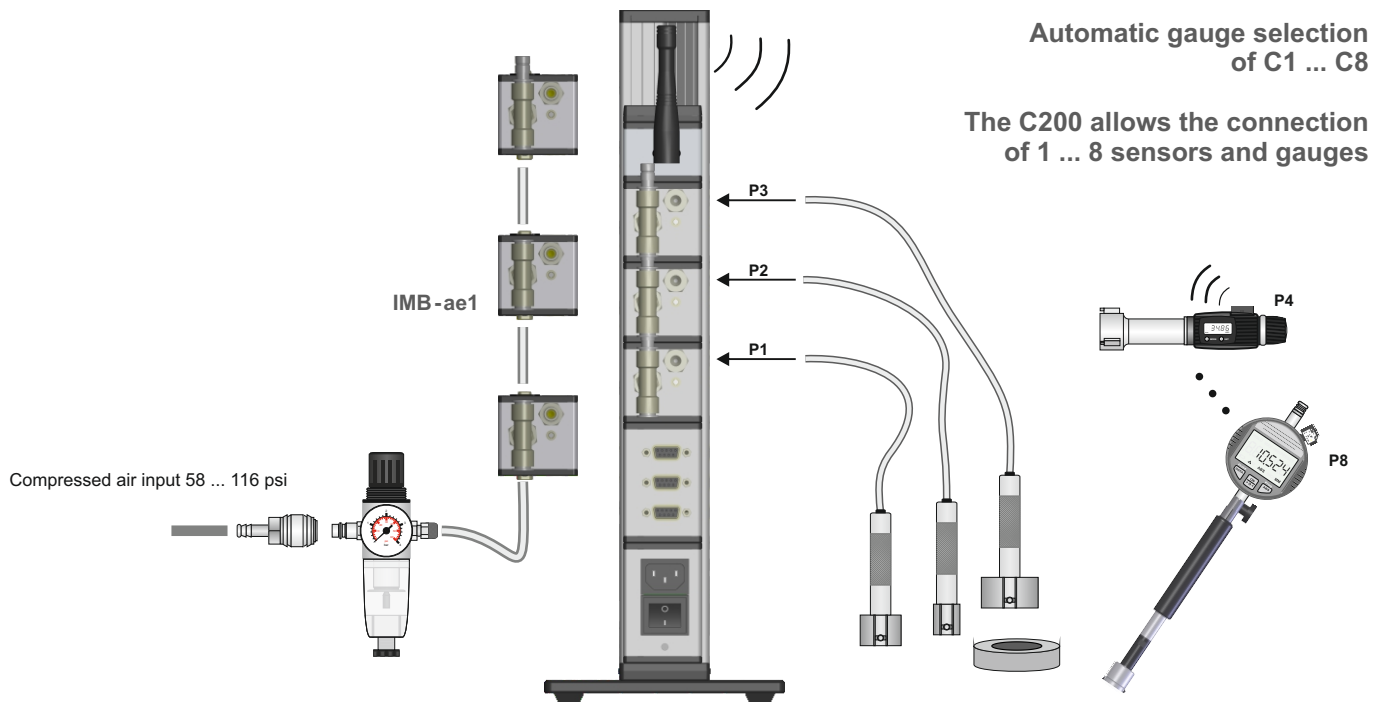


## Testing of a component with 3 characteristics



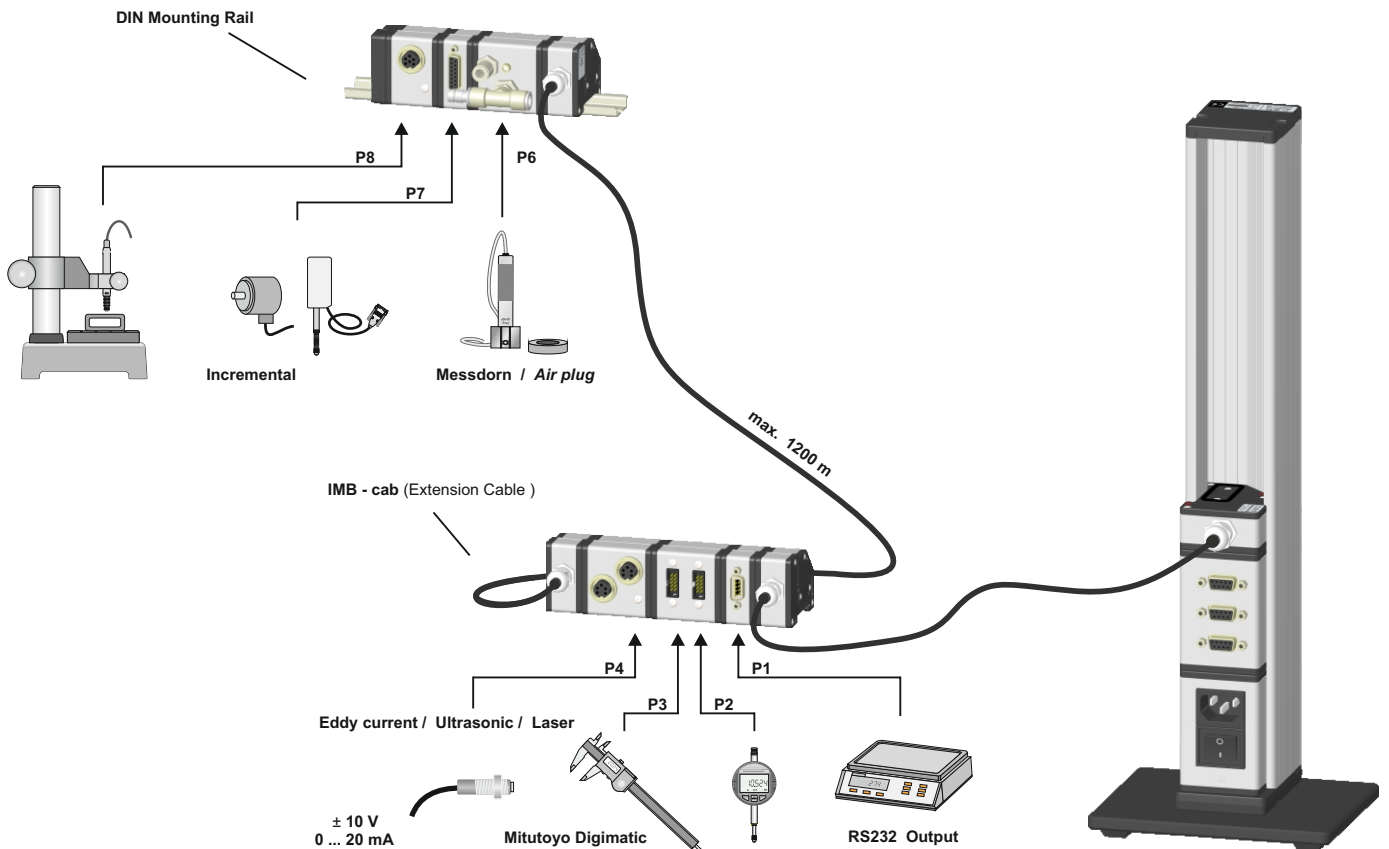
# Application examples

## Connection of 1 ... 8 bore gauges



## Connection of various gauges

Connection of various sensors and gauges, expanded build-up using IMB extension cables



## Technical data ProX200

### Mechanical characteristics

Case	Aluminium, plastic top and bottom parts
Base	Unplasticised PVC
Front panel	Acryl glass ( scratch-proof )
Dimensions / Weight	( WxHxD ) 56 x 418.5 x 86 mm / 1340 g

### Electrical characteristics

Power supplies: IMB-ps2	Switched power supply 100 ... 240 VAC
IMB-dc1	Supply with DC voltage 9 ... 32 VDC
IMB-acc	Accu module ( 1850 ... 5500 mAh )
Max. power consumption	2.5 VA ( without measuring modules )

### Display

Column display	103 + 2 LEDs for "out-of-range" display, 3-colours with auto. colour selection
LED numeric displays	6-digit+2-digit ( 7.62 mm )
Programming menu LEDs	17 LEDs, red

### Connections

IMBus	EIA RS485, 64 clients, length 1200 m
Interface	EIA RS232 ( 4800, E, 7, 2 )
Ft1 / Ft2	Trigger inputs for external contacts and outputs for tolerance adapters

### Measurement parameters

Measuring range / Digit step	$\pm 99.9999$ mm / 0.1 $\mu$ m, $\pm 4$ / 0.00001 inch
Resolution	16 bits ( analog ), 24 bits ( incremental )
Sampling rate	50 measurements per second

*For specifications concerning measurement error, linearity, hysteresis and temperature drift please refer to the technical data of the particular IMBus module*

### Environmental conditions

Operation / Storage temp.	0 ... 50 °C / -20 ... +60 °C
Protection class	Front panel IP65 ( CEI / IEC 529 ) Rear panel depending on the modules

EMC conformity EN50081 - 2 and EN50082 - 2

## Software support

### ProX200 PC Configuration Software

The PC Software allows the programming of the ProX200 via the PC. Test schemes can be created, loaded and saved. In addition the software allows firmware updates and special settings.

### IBREXDLL

The IBREXDLL software allows reading in of measured data from one or several ProX200 column gages to MS-Excel. The data can be assigned freely to the cells of any Excel workbook. Afterwards the collected measured data can be statistically analysed by control charts, run charts, histograms and statistical data.

## Sterling ProMeasure Systems, Inc.

6750 19 Mile Road  
Sterling Heights, Michigan 48314, USA

Tel. : 248.210.6563  
E-Mail : [salesupport@promasure.com](mailto:salesupport@promasure.com)  
Web : [www.promasure.com](http://www.promasure.com)