

GageXpress Pro 3.0 SPC Gaging Software provides the complete solution for inspecting parts, calibration and viewing resultant data. Applications can be easily configured for both manual, semi-automatic or automatic gaging configurations. Inputs from a variety of sensors such as LVDT digital probes, Air to Electronic converters, Digital Indicators and Digital I/O are plug and play through a universal USB interface. Sterling ProMeasure Systems is the total solution for your gaging needs.



Sterling ProMeasure Systems

Sterling Heights, Michigan 48314

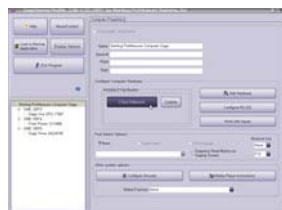
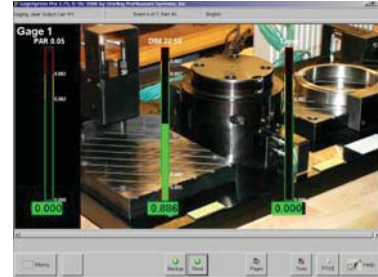
586-254-5310 x243
Fax: 586-254-6566

sales@promasure.com
www.promasure.com

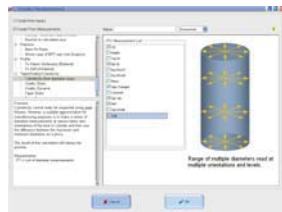
SOFTWARE

GAGEXPRESS Pro 3.0

SPC GAGING



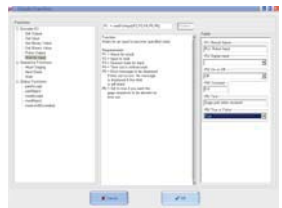
ProFile Configuration consists of objects, properties and sequences using the objects. The objects involve the workstation, assigned gages and individual parts. Then inputs, calibration fields, measurements and parts are easily established to configure the complete file for gaging. By using this approach, setup time is minimized by 30 to 65%.



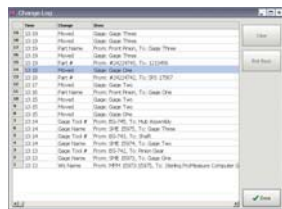
Probes or Measurements Measurements are what a gage fixture is all about. Graphical templates are extensively used without requiring an extensive mathematical or metrology knowledge. Just choose the Geometric Dimension & Tolerance (GDT) category and enter probes or previous measurements from pull down menus. Mistakes are eliminated and the accuracy of gage setup is maximized.



Backup or Install All programs have some form of backup. GageXpress allows you to make infinite backup copies of programs that are date and time stamped. In this manner you can revert to previous editions of your gage files quickly and effortlessly. GageXpress Pro 2.0 is the 5th generation of gaging software.



Logical Expression I/O Boolean logic is integrated throughout the gaging process. This means that inputs, probe and measurement values can be evaluated logically. The results can be used to set outputs. Setup is graphical and pull down menus allow setup up available options. No programming experience is required.

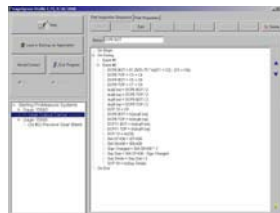
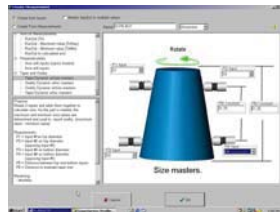


Change Log All changes made to a program are logged. If formulas or probe assignments are altered, the date and time of the changes are recorded. A marker can be set in the change log and all alterations can be undone from that point. Your files are now secured from unauthorized tampering. And modifications can be done quickly without having to reinstall a previous version of the configuration.



Tool Compensation Tool compensation modules allow advanced software configuration and integration to the process directly via RS232 data communication. Other options define hardware interfaces that wire directly to the machine controllers. In either case, all parameters are user selectable from pull down menus expediting the accuracy of CNC control and setup.

GageXpress Pro 3.0 SPC Gaging Software



Brilliant Graphics Part status is displayed with the part image, bar columns, or digital readouts. Part images include importation of multimedia files such as photographs, CAD, TIF and more, including movies. The unique presentation provides a clear, easily understood operator interface reducing gaging time and errors.

User Friendly Multiple gage files and gaging events are easily selected through embedded hot buttons. GageXpress Pro 3.0 is easily user configured. We eliminated the confusing and time consuming explorer navigation based layouts used in the past.

Formula Database A complete reference of metrological formulas show graphically how to set-up gage checks. The library of mathematical functions offers the complete solution for complex characteristic analysis. Individual gage probes and previous characteristics can be selected by pull-down menus. Take full advantage of ProMeasure's extensive gaging background.

Universal Compatibility GageXpress Pro 3.0 is native to Microsoft Windows®, not a dressed up version of a DOS package. All Sterling ProMeasure Systems are supplied with Microsoft Windows XP Professional® and compatible with system networking.

SPC Data Collection A realtime database stores and allows management of SPC information. A complete range of charts are available including Xbar-R, Xbar-S, Histogram, and Statistical Summary. Data can be sorted based upon user defined tags. Information is printed directly from the gage station or exported in ASCII for text, Microsoft Excel®, DataMyte® or O-DAS®.

New Advanced Features Automatic resize allows your graphics to run on any size display without any time consuming changes by the user. Scaling between metric and English is operator selectable. Displayed numeric results can be changed from engineering specifications to deviation results by the touch of a button.

Cost Effective The fast and flexible setup of GageXpress Pro 3.0 will improve quality, increase productivity, reduce scrap, eliminate paperwork, improve accuracy and reliability, fulfill compliance requirements and increase profits.

Gage R&R is integrated in the SPC software suite for validating gage performance to AIAG MSA Third Edition standards. Historical data is stored and easily exported to track gage and machine performance.

Key Advantages GageXpress Pro 3.0 SPC Gaging Software is developed in-house with Sterling ProMeasure Systems experienced hardware, software and applications team. Custom software solutions can also be integrated as an option to meet specific customer requirements. Please contact Sterling ProMeasure Systems or your representative for your specific production goals.